

# High Voltage Diodes - Formed Lead

0.75A - 2.00A • 30ns - 50ns • Hermetic

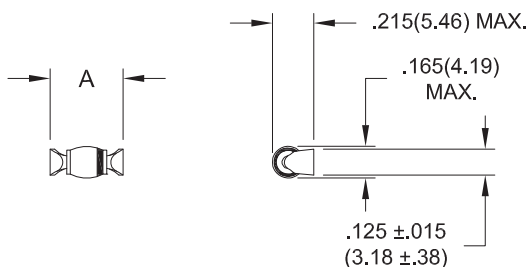
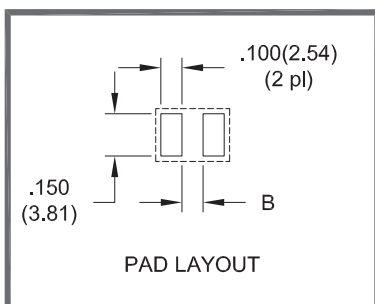
## ELECTRICAL CHARACTERISTICS AND MAXIMUM RATINGS

Part Number	Working Reverse Voltage (V <sub>rw</sub> )	Average Rectified Current (I <sub>o</sub> )		Reverse Current @ V <sub>rw</sub> (I <sub>r</sub> )		Forward Voltage (V <sub>f</sub> )		1 Cycle Surge Current t <sub>p</sub> =8.3ms (I <sub>fsm</sub> )	Repetitive Surge Current (I <sub>frm</sub> )	Reverse Recovery Time (3) (T <sub>rr</sub> )	Thermal Impd. θ <sub>J-C</sub>	Junction Cap. @50VDC @1kHz (C <sub>j</sub> )
		55°C(1)	100°C(2)	25°C	100°C	25°C		25°C	25°C	25°C	25°C	25°C
	Volts	Amps	Amps	µA	µA	Volts	Amps	Amps	Amps	ns	°C/W	pF
1N6837LL	5000	0.75	0.50	1.0	25	12.0	0.50	20	4	30	5.0	16
1N6838LL 1N6839LL	2000 5000	2.00 1.00	1.50 0.60	1.0 1.0	25 25	4.5 10.0	1.50 0.60	60 30	10 6	50 50	5.0 5.0	20 16

(1)TC=55°C (2)TC=100°C (3)I<sub>f</sub>=0.5A, I<sub>r</sub>=1.0A, I<sub>rr</sub>=0.25A \*Op. Temp.= -65°C to +175°C Stg. Temp.= -65°C to +200°C



Part	A	B
1N6837LL	.390(9.91) MAX.	.260 (6.60)
1N6838LL	.350(8.89) MAX.	.220 (5.59)
1N6839LL	.390(9.91) MAX.	.260 (6.60)



.022 ± 0.003  
(.56 ± 0.08)  
Dimension uncontrolled  
in this area due to  
solder fillet.

Dimensions: In. (mm) • All temperatures are ambient unless otherwise noted. • Data subject to change without notice.



Voltage Multipliers Inc.

8711 W. Roosevelt Ave.  
Visalia, CA 93291 USA

Tel: 559.651.1402  
Fax: 559.651.0740

[www.voltagemultipliers.com](http://www.voltagemultipliers.com)  
[www.highvoltagepowersupplies.com](http://www.highvoltagepowersupplies.com)

# 1N6837LL 1N6838LL 1N6839LL

2

