

# 3,000V Surface Mount Multiplier

Original Release: 12-17-08  
 Revised Date: 07-10-09

1.0 $\mu$ A - 50.0 $\mu$ A • 12 Stages

## ELECTRICAL CHARACTERISTICS AND MAXIMUM RATINGS

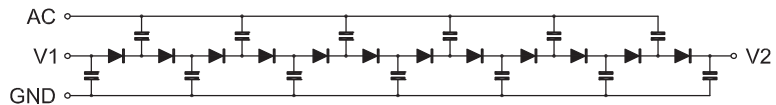
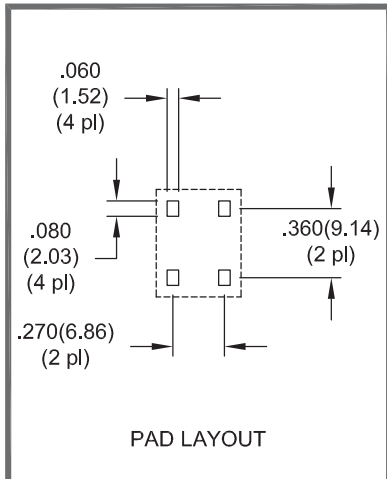
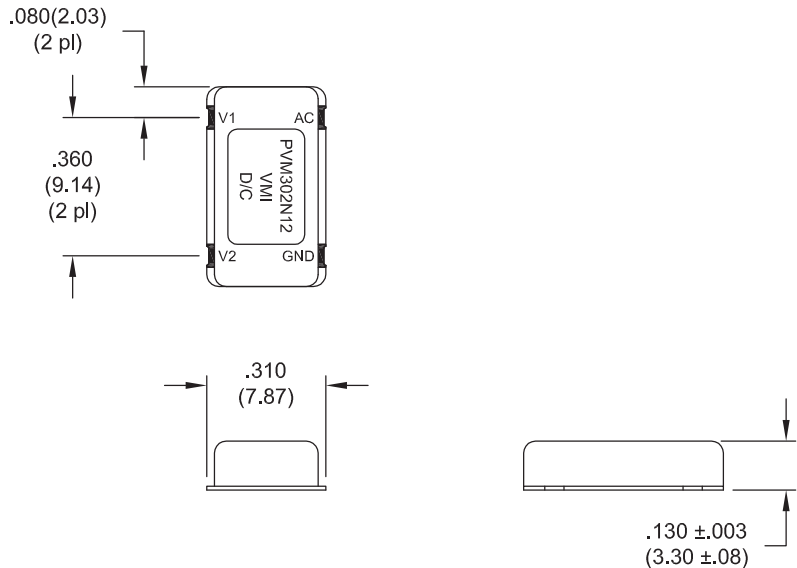
Part Number	Maximum A.C. Input Voltage	Maximum D.C. Output Voltage (One Multiplier)	Maximum D.C. Output Voltage (Two Multipliers in Series or Floating)	Typical Output Current Range (1)	Typical Frequency	Number of Stages
	V <sub>PP</sub>	V <sub>DC</sub>	V <sub>DC</sub>	$\mu$ A	kHz	
PVM302N12	600	- 3000	- 6000	1.0 - 50.0	10 - 100	12

Operating Temp: -55°C to +150°C      Storage Temp: -65°C to +150°C

(1) Refer to load lines on next page.

Plating:  
 Electroless Nickel / Immersion Gold  
 Sn100CL Solder Finish, Hot air leveling  
 per IPC-4552.

Tolerance:  
 .XXX  $\pm$ .010



Dimensions: In. (mm) • All temperatures are ambient unless otherwise noted. • Data subject to change without notice.



Voltage Multipliers Inc.

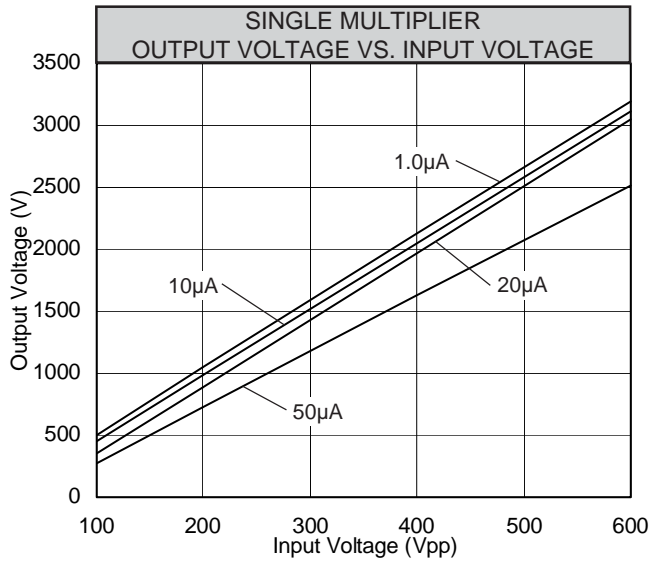
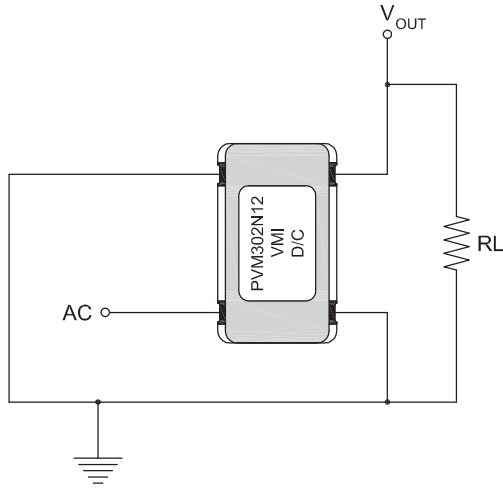
8711 W. Roosevelt Ave.  
 Visalia, CA 93291 USA

Tel: 559.651.1402  
 Fax: 559.651.0740

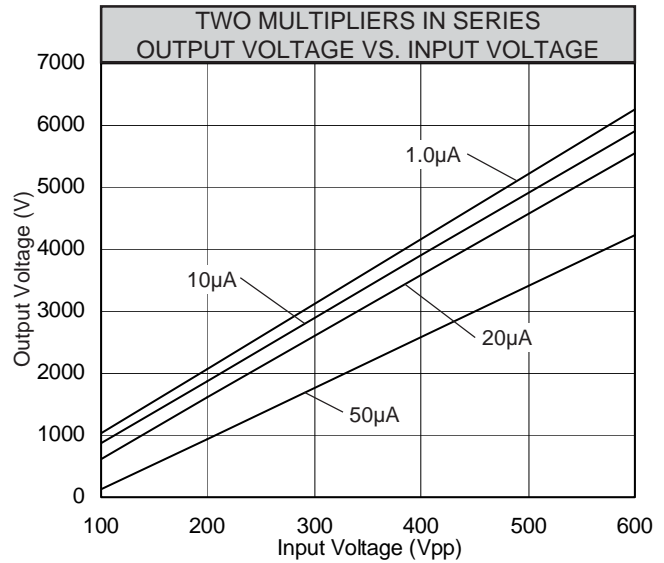
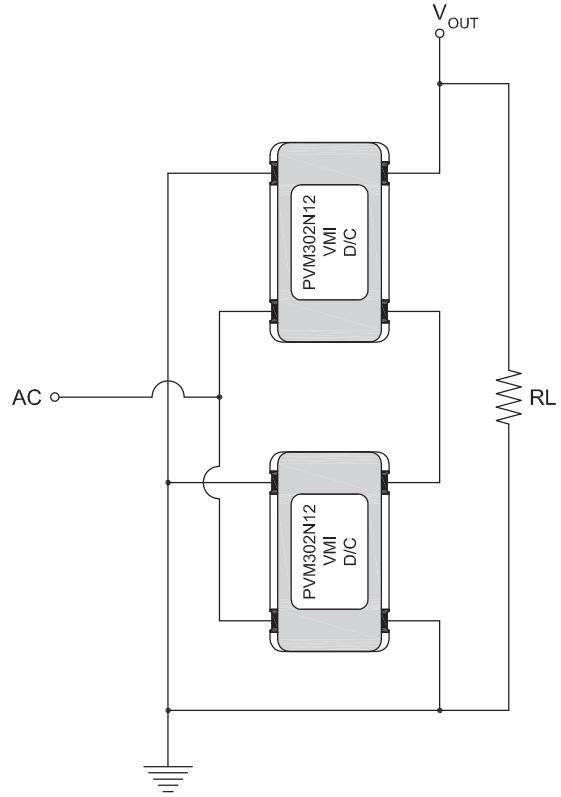
www.voltagemultipliers.com  
 www.highvoltagepowersupplies.com

# PVM302N12

Typical Single Multiplier Circuit



Typical Circuit  
Showing Two Multipliers in Series



Dimensions: In. (mm) • All temperatures are ambient unless otherwise noted. • Data subject to change without notice.



**Voltage Multipliers Inc.**

8711 W. Roosevelt Ave.  
Visalia, CA 93291 USA

Tel: 559.651.1402

Fax: 559.651.0740

[www.voltagemultipliers.com](http://www.voltagemultipliers.com)  
[www.highvoltagepowersupplies.com](http://www.highvoltagepowersupplies.com)