

2,000V - 3,000V Surface Mount Multiplier

Original Release: 08-11-08

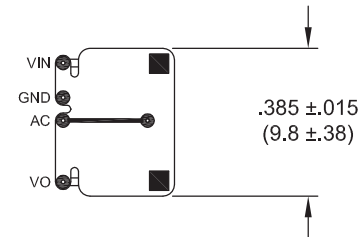
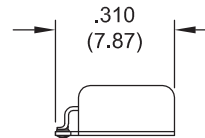
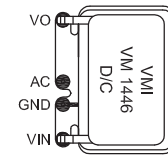
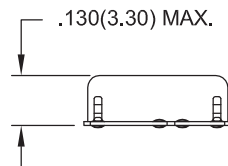
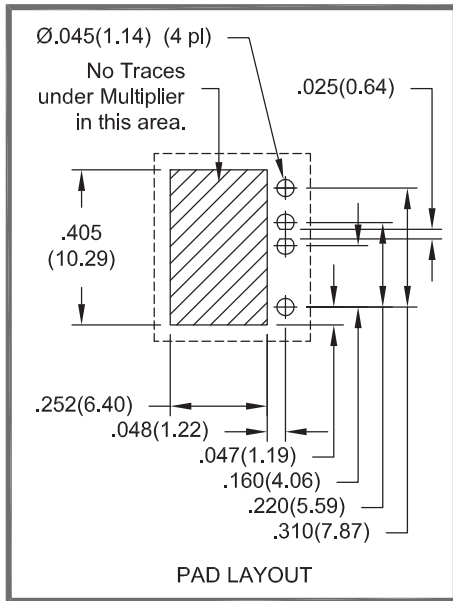
0 μ A - 50.0 μ A • 6 - 8 Stages

ELECTRICAL CHARACTERISTICS AND MAXIMUM RATINGS						
Part Number	Maximum A.C. Input Voltage	Maximum D.C. Output Voltage (One Multiplier)	Maximum D.C. Output Voltage (Two Multipliers in Series or Floating)	Typical Output Current Range (1)	Typical Frequency	Number of Stages
	V _{PP}	V _{DC}	V _{DC}	μ A	kHz	
VM1446	800	- 2000	- 4000	0 - 50.0	10 - 100	6
VM1448	800	3000	6000	0 - 50.0	10 - 100	8
VM1548	800	- 2000	- 4000	0 - 50.0	10 - 100	6

Operating Temp: -55°C to +150°C Storage Temp: -65°C to +150°C

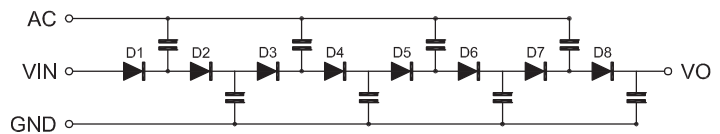
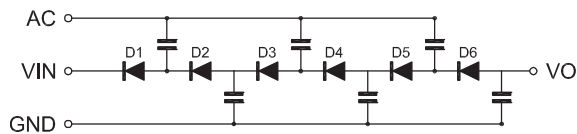
Plating:
Electroless Nickel / Immersion Gold
(ENIG) per IPC-4552.

Tolerance:
.XXX \pm .010



VM1446 / VM1548

VM1448



Dimensions: In. (mm) • All temperatures are ambient unless otherwise noted. • Data subject to change without notice.



Voltage Multipliers Inc.

8711 W. Roosevelt Ave.
Visalia, CA 93291 USA

Tel: 559.651.1402
Fax: 559.651.0740

www.voltagemultipliers.com
www.highvoltagepowersupplies.com